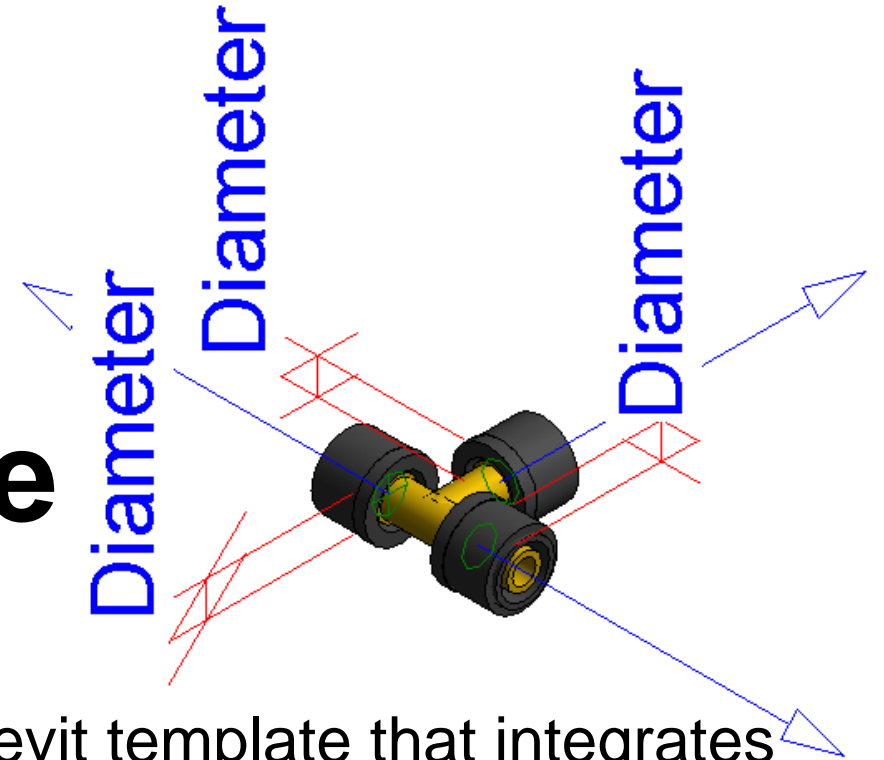


# Revit Template Guideline for FASTLOC EX+

This guideline provides instructions for creating a Revit template that integrates FASTLOC EX+ products efficiently, ensuring consistent standards and enhanced productivity in BIM projects.



# Introduction & Setup

- **Purpose of the Template:**
  - Efficient integration of FASTLOC EX+ products in Revit projects.
  - Ensures consistent standards and comprehensive integration, including the regions where the products are available.
- **Preparation:**
  - **Software Requirements:** Compatible with Revit 2023 or later.
- **Setup Language & Region:**
  - Adjust language settings and regional standards (units, dimension styles, pipe system labels).
  - Add labels in the respective languages and select product availability per region.

# Regions & Product availability

The regions where FASTLOC EX+ products are available and how these are integrated into the template.

## Family Types

Type name: FSL T-Piece EX+ AT

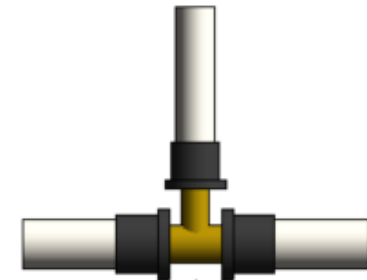
FSL T-Piece EX+ AT

Search param FSL T-Piece EX+ DE

Parameter

Constraints

Default Elevation

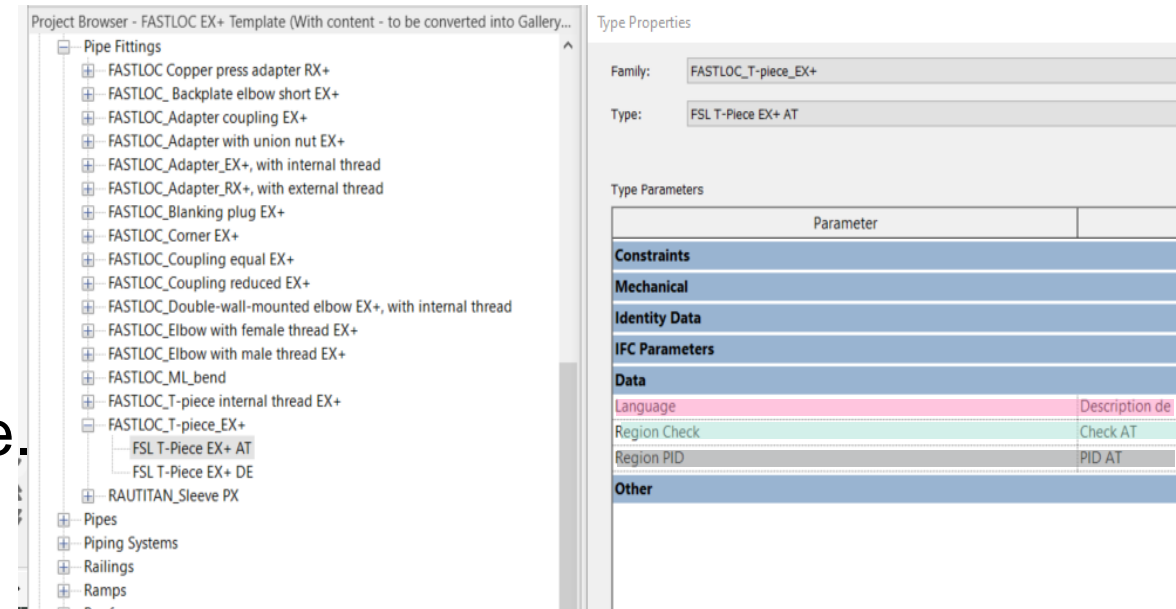


REHAU T-Stück FASTLOC EX+ 20 - 16 - 20  
13706571001

# Setup Language & Region

To create a Family Type for a different region:

- Open the property panel of the Revit family and duplicate the existing family type.
- Update the following parameters:
  - Set the "Language" parameter to: "Description" + "Language Code".
  - Set the "Region Check" parameter to: "Check" + "Country Code".
  - Set the "Region PID" parameter to: "PID" + "Country Code".



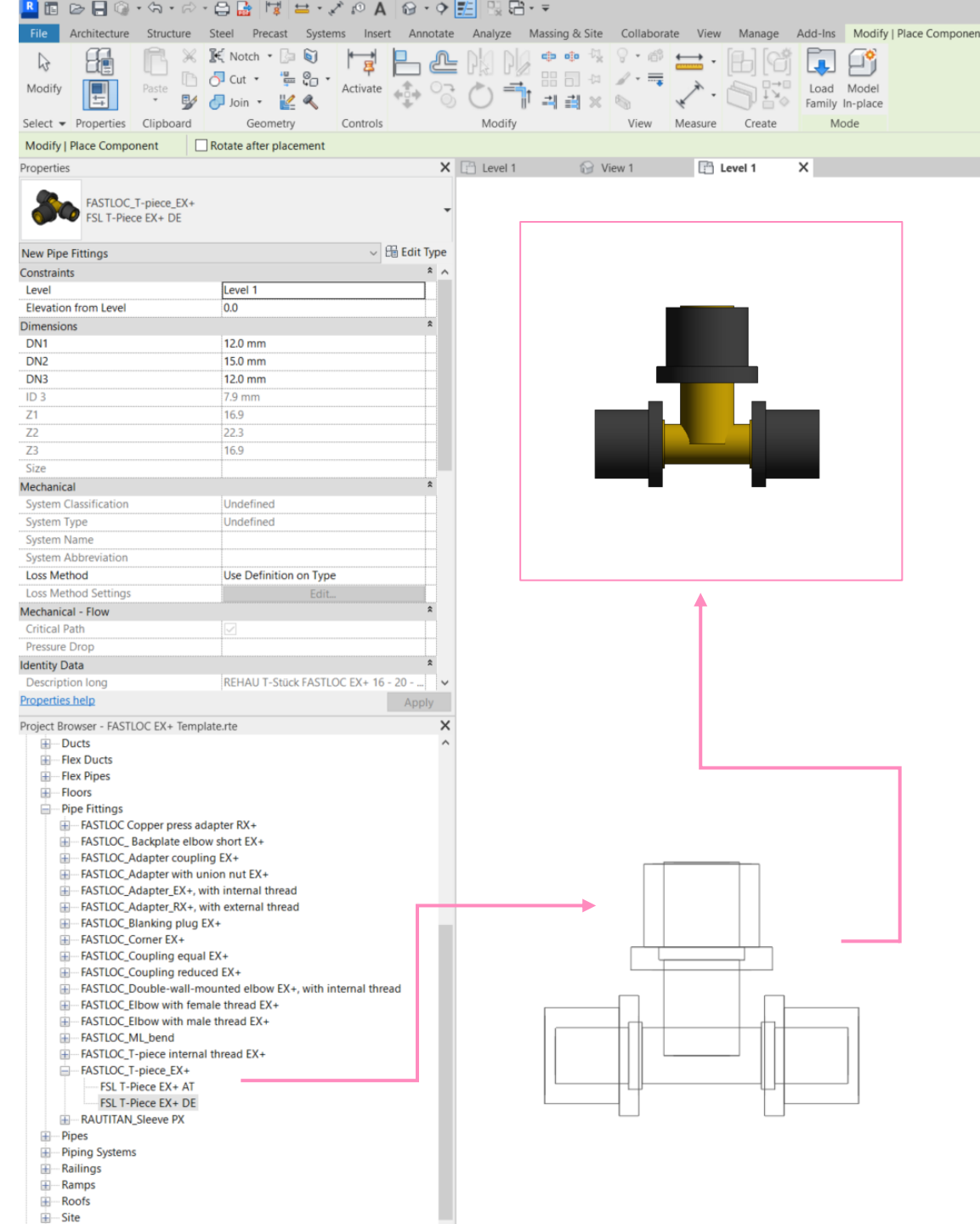
# REHAU schedule

- The REHAU schedule includes key parameters like **Type**, **Description Long**, **PID**, **Region Check**, **Region PID**, **Manufacturer** and **Count** to classify products, verify regional availability and track quantities in the project efficiently.

<REHAU	
A	B
Type	Description long
FASTLOC_Double-wall-mounted elbow EX+, with internal thread AT	REHAU Backplate elbow double FASTLOC EX+ 16 - R 1/2
FASTLOC_Double-wall-mounted elbow EX+, with internal thread AT	REHAU Backplate elbow double FASTLOC EX+ 20 - R 1/2
FASTLOC_Double-wall-mounted elbow EX+, with internal thread DE	REHAU Backplate elbow double FASTLOC EX+ 16 - R 3/4
FASTLOC_Double-wall-mounted elbow EX+, with internal thread DE	REHAU Backplate elbow double FASTLOC EX+ 20 - R 3/4
FSL A C external EX+ AT	REHAU Straight connector FASTLOC RX+ 16 - R 1/2
FSL A C external EX+ AT	REHAU Straight connector FASTLOC RX+ 16 - R 3/4
FSL A C external EX+ AT	REHAU Straight connector FASTLOC RX+ 20 - R 1/2
FSL A C external EX+ AT	REHAU Straight connector FASTLOC RX+ 20 - R 3/4
FSL A C external EX+ AT	REHAU Straight connector FASTLOC RX+ 25 - R 3/4
FSL A C external EX+ AT	REHAU Straight connector FASTLOC RX+ 25 - R 1
FSL A C external EX+ AT	REHAU Straight connector FASTLOC RX+ 32 - R 1
FSL A C external EX+ DE	REHAU Übergang FASTLOC RX+ 16 - R 1/2
FSL A C external EX+ DE	REHAU Übergang FASTLOC RX+ 16 - R 3/4
FSL A C external EX+ DE	REHAU Übergang FASTLOC RX+ 20 - R 1/2
FSL A C external EX+ DE	REHAU Übergang FASTLOC RX+ 20 - R 3/4
FSL A C external EX+ DE	REHAU Übergang FASTLOC RX+ 25 - R 3/4
FSL A C external EX+ DE	REHAU Übergang FASTLOC RX+ 25 - R 1
FSL A C external EX+ DE	REHAU Übergang FASTLOC RX+ 32 - R 1
FSL A internal AT	REHAU Elbow FASTLOC EX+, male thread 16 - R 1/2
FSL A internal AT	REHAU Elbow FASTLOC EX+, male thread 20 - R 1/2
FSL A internal AT	REHAU Elbow FASTLOC EX+, male thread 20 - R 3/4
FSL A internal AT	REHAU Elbow FASTLOC EX+, male thread 25 - R 3/4
FSL A internal AT	REHAU Elbow FASTLOC EX+, male thread 32 - R 1
FSL A internal AT	REHAU Elbow FASTLOC EX+, with fem.thread 16 - R 1/2
FSL A internal AT	REHAU Elbow FASTLOC EX+, with fem.thread 20 - R 1/2
FSL A internal AT	REHAU Elbow FASTLOC EX+, with fem.thread 20 - R 3/4
FSL A internal AT	REHAU Elbow FASTLOC EX+, with fem.thread 25 - R 3/4
FSL A internal AT	REHAU Elbow FASTLOC EX+, with fem.thread 32 - R 1
FSL A internal AT	REHAU Straight connector FASTLOC EX+ 16 - R p 1
FSL A internal AT	REHAU Straight connector FASTLOC EX+ 20 - R p 1

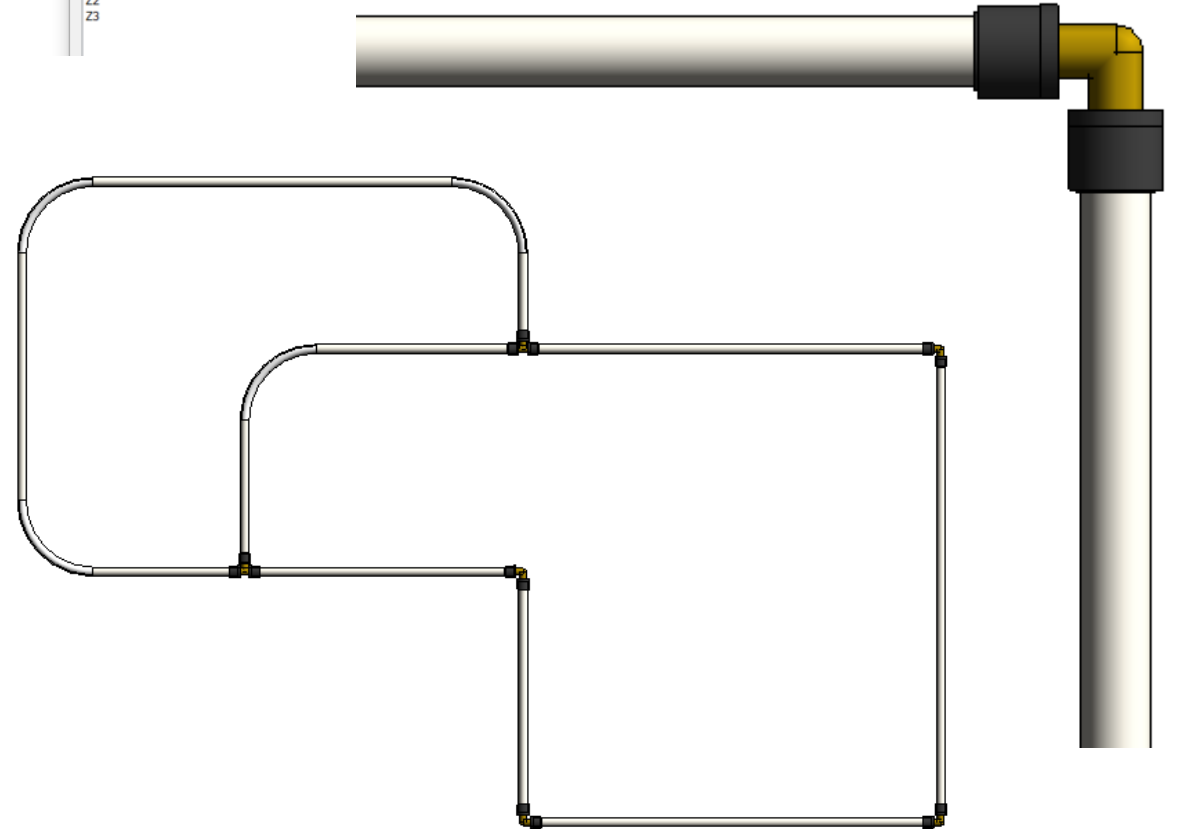
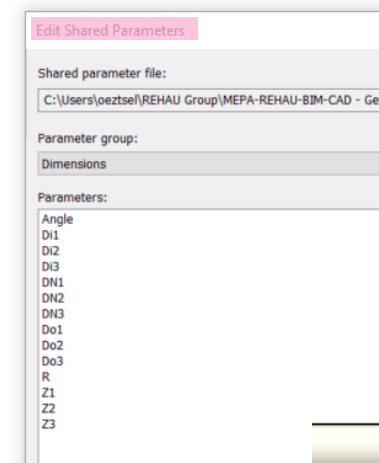
# Importing Pipes & Fittings

- All FASTLOC EX+ pipe and fitting families are already included in the template under Pipe Fittings.
  - Open the template and navigate to **Project Browser > Families > Pipe Fittings** to find the preloaded components.
  - To use a component, simply drag and drop it into your project.



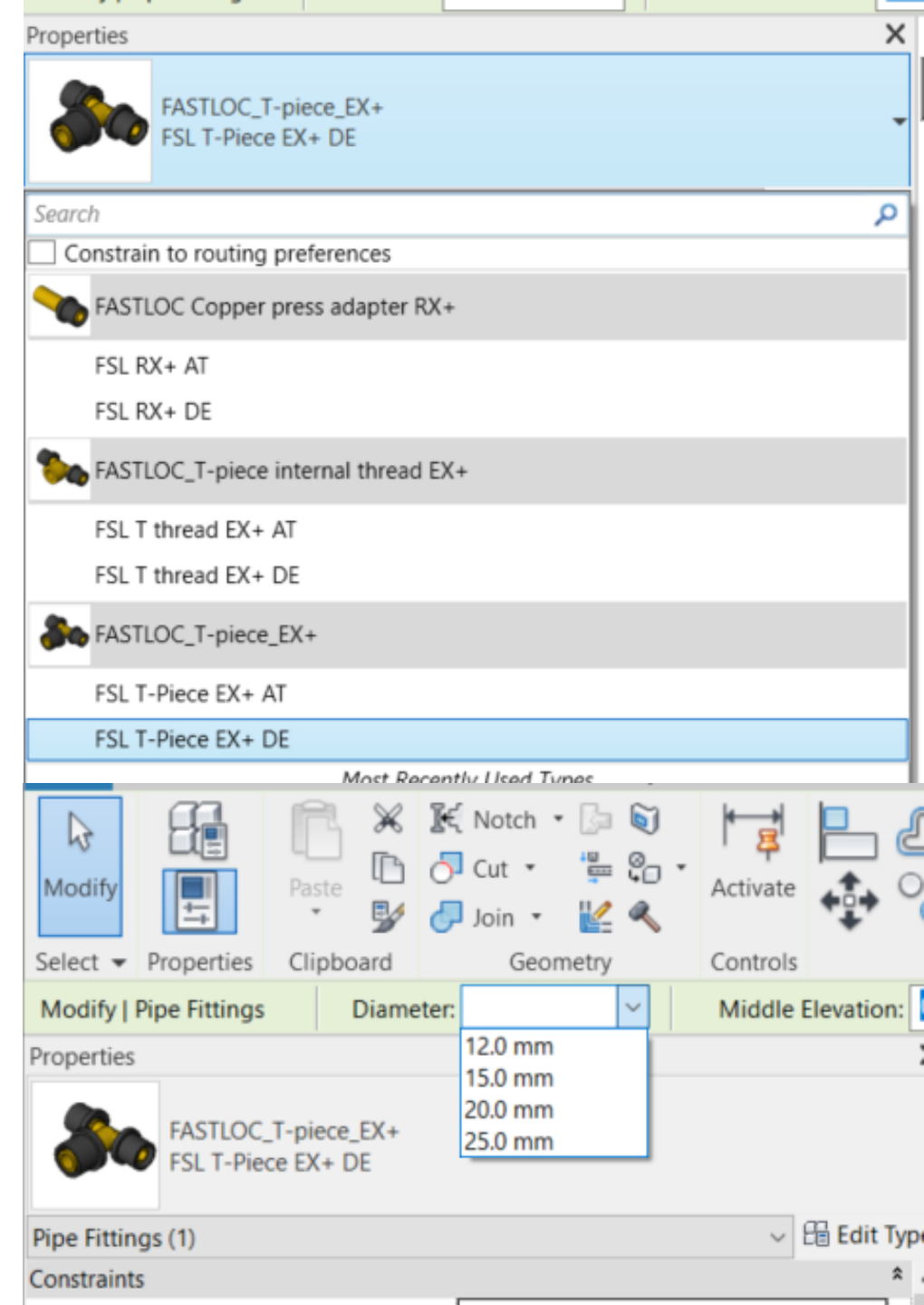
# Optimizing Family Setup in Revit

- **Assigning Parameters:**
  - Ensure families have parameters for diameter, material, etc.
  - Validate **shared parameters** for consistency across projects.
- **Testing Connections:**
  - Test all FASTLOC EX+ products to ensure proper fitting connections in the template.



# Assigning Parameters

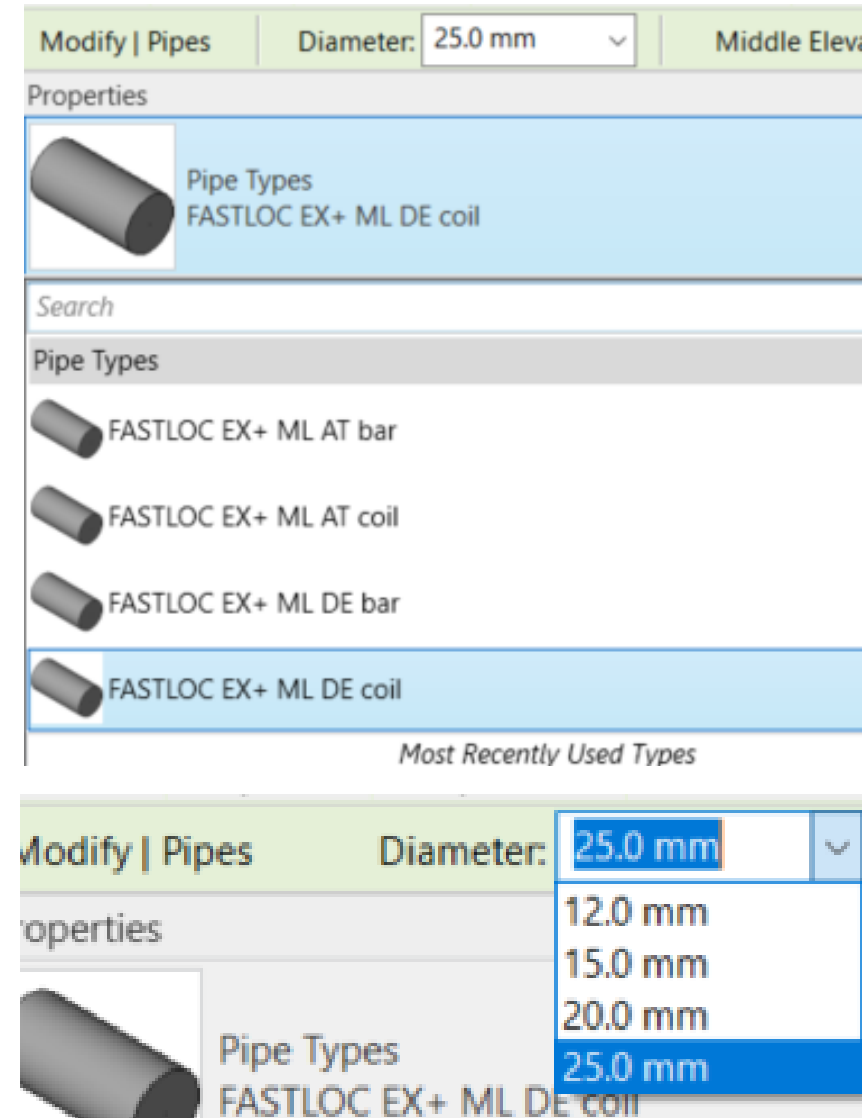
- Includes predefined nominal diameters and materials for FASTLOC EX+ fittings.
- Configured for seamless integration and immediate use.





# Pipe dimensions & types

- Includes predefined nominal diameters and materials for FASTLOC EX+ pipes.
- Configured for seamless integration and immediate use.



# Pipe schedule

- The pipe schedule includes the following parameters: **Type**, **Diameter**, **Outer Diameter**, **Length**, **Manufacturer** and **Material**.

<Pi			
A	B	C	
Type	Segment Descriptio	Diameter	Outs
FASTLOC EX+ ML AT bar		12.0 mm	16 mm
FASTLOC EX+ ML AT bar		15.0 mm	20 mm
FASTLOC EX+ ML AT bar		20.0 mm	25 mm
FASTLOC EX+ ML AT bar		25.0 mm	32 mm
FASTLOC EX+ ML AT coil		12.0 mm	16 mm
FASTLOC EX+ ML AT coil		15.0 mm	20 mm
FASTLOC EX+ ML AT coil		20.0 mm	25 mm
FASTLOC EX+ ML AT coil		25.0 mm	32 mm
FASTLOC EX+ ML DE bar		12.0 mm	16 mm
FASTLOC EX+ ML DE bar		15.0 mm	20 mm
FASTLOC EX+ ML DE bar		20.0 mm	25 mm
FASTLOC EX+ ML DE bar		25.0 mm	32 mm
FASTLOC EX+ ML DE coil		12.0 mm	16 mm
FASTLOC EX+ ML DE coil		15.0 mm	20 mm
FASTLOC EX+ ML DE coil		20.0 mm	25 mm
FASTLOC EX+ ML DE coil		25.0 mm	32 mm